



THE POWER OF INTEGRATED LOGISTICS
PKP CARGO GROUP



THE PKP CARGO GROUP IS
A **LEADING INTERNATIONAL
OPERATOR OF RAILWAY FREIGHT
TRANSPORT** IN POLAND
AND THE EUROPEAN UNION.



We offer transportation services in integrated logistics chains, combining **rail, road, and sea transport**.

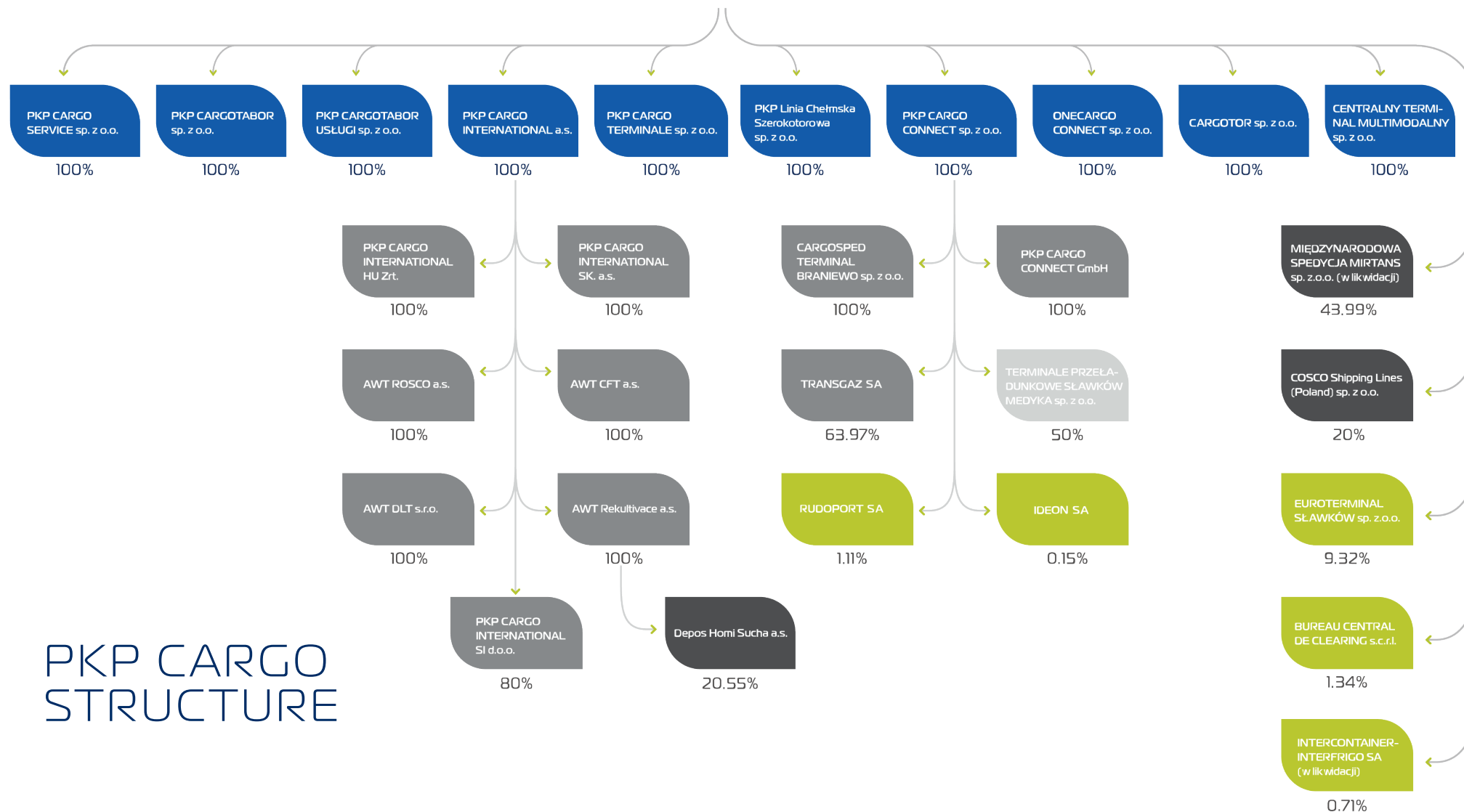
Our services include **transport, forwarding, reloading, warehousing, and customs clearance**.



Many industries, including **mining, metallurgical, construction, chemical, food, wood, and automotive**, use our services. Our offer is tailored to the individual needs of the customer.

The PKP CARGO Group includes companies such as **PKP CARGO, PKP CARGO CONNECT, PKP CARGO TERMINALE, PKP CARGO INTERNATIONAL, PKP CARGO TABOR, and PKP CARGO SERVICE**.

PKP CARGO SA



PKP CARGO GROUP **IN NUMBERS**

82.7
mln tons
of freight
volume

20
subsidiary
companies

20 ths
employees

Over
1500
locomotives

Over
52,000
train cars

STRENGTHENING THE POSITION OF A LEADING LOGISTICS OPERATOR

RAIL FREIGHT TRANSPORT



**INTERMODAL
SERVICES**



SHIPPING
(DOMESTIC AND
INTERNATIONAL)



TERMINALS



**RAIL SIDINGS
AND TRACTION
SERVICES**



**ROLLING
STOCK**
MAINTENANCE
AND REPAIRS



**RECLAMATION
SERVICES**



PKP CARGO GROUP ON KEY UE TRANSPORT CORRIDORS

WE OPERATE WITHIN THE BALTIC AND NORTH SEAS AND THE ADRIATIC,
AS WELL AS ON THE NEW SILK ROAD.



PKP CARGO GROUP

ON KEY UE
TRANSPORT
CORRIDORS

WE CONSISTENTLY
STRENGTHEN OUR
PRESENCE IN CENTRAL
AND SOUTHERN EUROPE.

PKP CARGO Group
holds licenses
for the provision of
rail freight services
in the following **9 EU**
countries:

POLAND,
THE NETHERLANDS,
SLOVENIA,
AUSTRIA,
THE CZECH REPUBLIC,
GERMANY,
HUNGARY,
LITHUANIA,
SLOVAKIA.



Thanks to Poland's strategic location

at the crossroads of communication routes (East-West and North-South), we can play the role of a logistics hub serving international trade, not only between the EU and China, but also other countries in Europe and Asia.

WE OPERATE WITHIN THE BALTIC AND NORTH SEAS AND THE ADRIATIC,
AS WELL AS ON THE NEW SILK ROAD.



KEY UE TRANSPORT CORRIDORS IN THE CEE REGION



KEY UE TRANSPORT CORRIDORS IN THE CEE REGION

POLAND - STRATEGIC LOCATION IN THE NETWORK OF EU TRANSPORT CORRIDORS

**Significant
share** ▶
of the road
transport between
the Balcan
region and
Scandinavian
countries

▶ **Main
transport
route**
between
Western
Europe and
CIS/Far East
countries

▶ **Main player**
in the Baltic-Adriatic
transport corridor

KEY UE TRANSPORT CORRIDORS IN THE CEE REGION



**POLAND –
STRATEGIC
LOCATION**
IN THE NETWORK
OF EU
TRANSPORT
CORRIDORS

OPERATING IN

PL	DE	CZ	SK
NL	BE	LT	AT
HU			

RAILWAY
FORWARDING

BG	RO	HR	SI
----	----	----	----



THE NORTH-SOUTH CORRIDORS AND THE NEW SILK ROAD

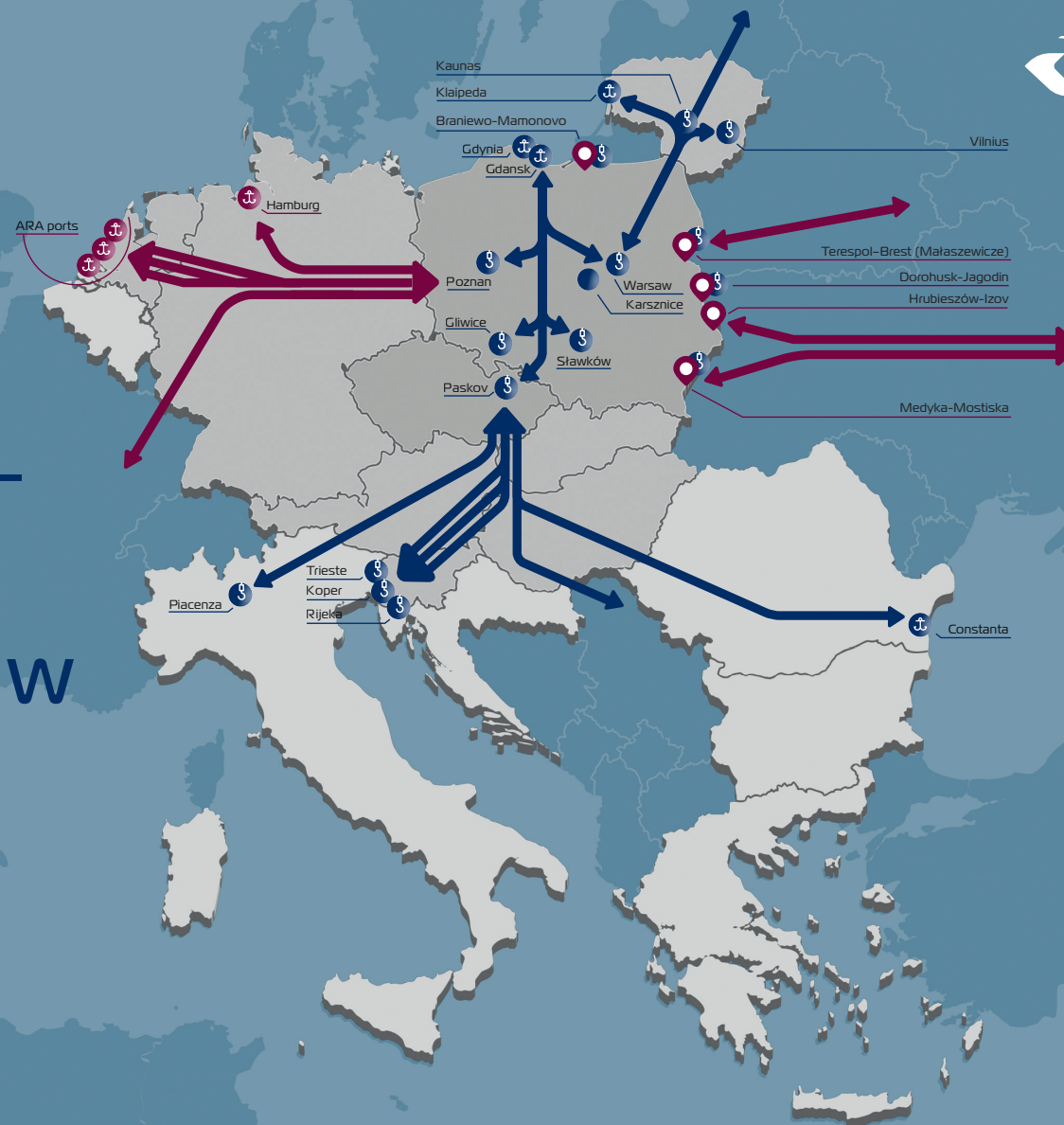
PKP CARGO GROUP'S KEY TRANSPORT ROUTES





THE NORTH-SOUTH CORRIDORS AND THE NEW SILK ROAD

PKP CARGO
GROUP'S KEY
TRANSPORT
ROUTES



Flow of
transported
goods on
the New Silk
Road



Flow of
transported
goods in
the North-
South
corridors

 Border crossings
1435/1520 mm

 Terminal

 Ports



DOMESTIC **PKP CARGO GROUP'S** TERMINALS

We have conventional, intermodal, and conventional-intermodal terminals.

We provide services related to reloading, unloading, and loading, as well as warehousing, sorting, and packaging of goods.

The PKP CARGO Group's terminal network allows for efficient transport of goods throughout the country, as well as on major transport routes in North-South and East-West Europe.

DOMESTIC PKP CARGO GROUP'S TERMINALS




40
THS TEU
POZNAN
FRANOWO




220
THS TEU
KARSZNICE



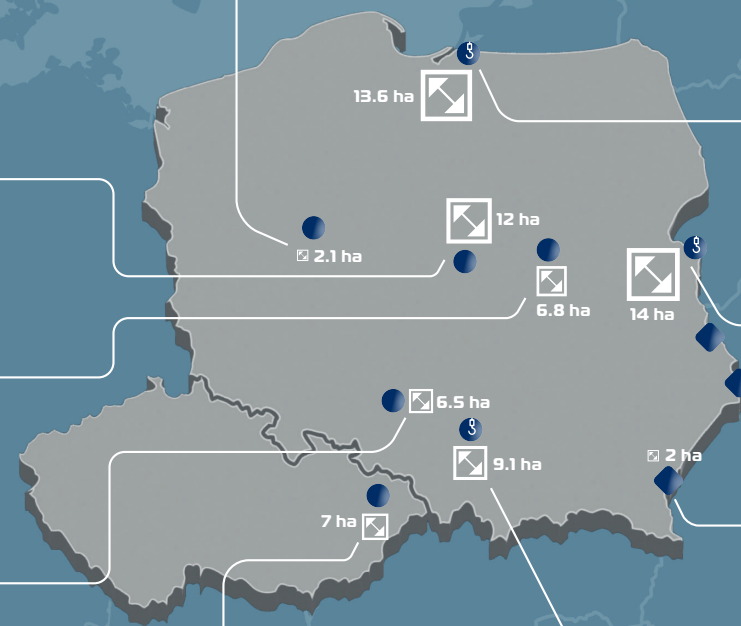

100
THS TEU
WARSAW





128
THS TEU
GLIWICE




200
THS TEU
PASKOV




40
THS TEU
BRANIEWO




224
THS TEU
MAŁASZEWICZE




44
THS TEU
MEDYKA




285
THS TEU
SŁAWKÓW



§ Intermodal and conventional terminals
● Intermodal terminals
◆ Conventional terminals



PKP CARGO'S TERMINALS ARE LOCATED ON STRATEGICALLY IMPORTANT TRANSPORTATION CORRIDORS

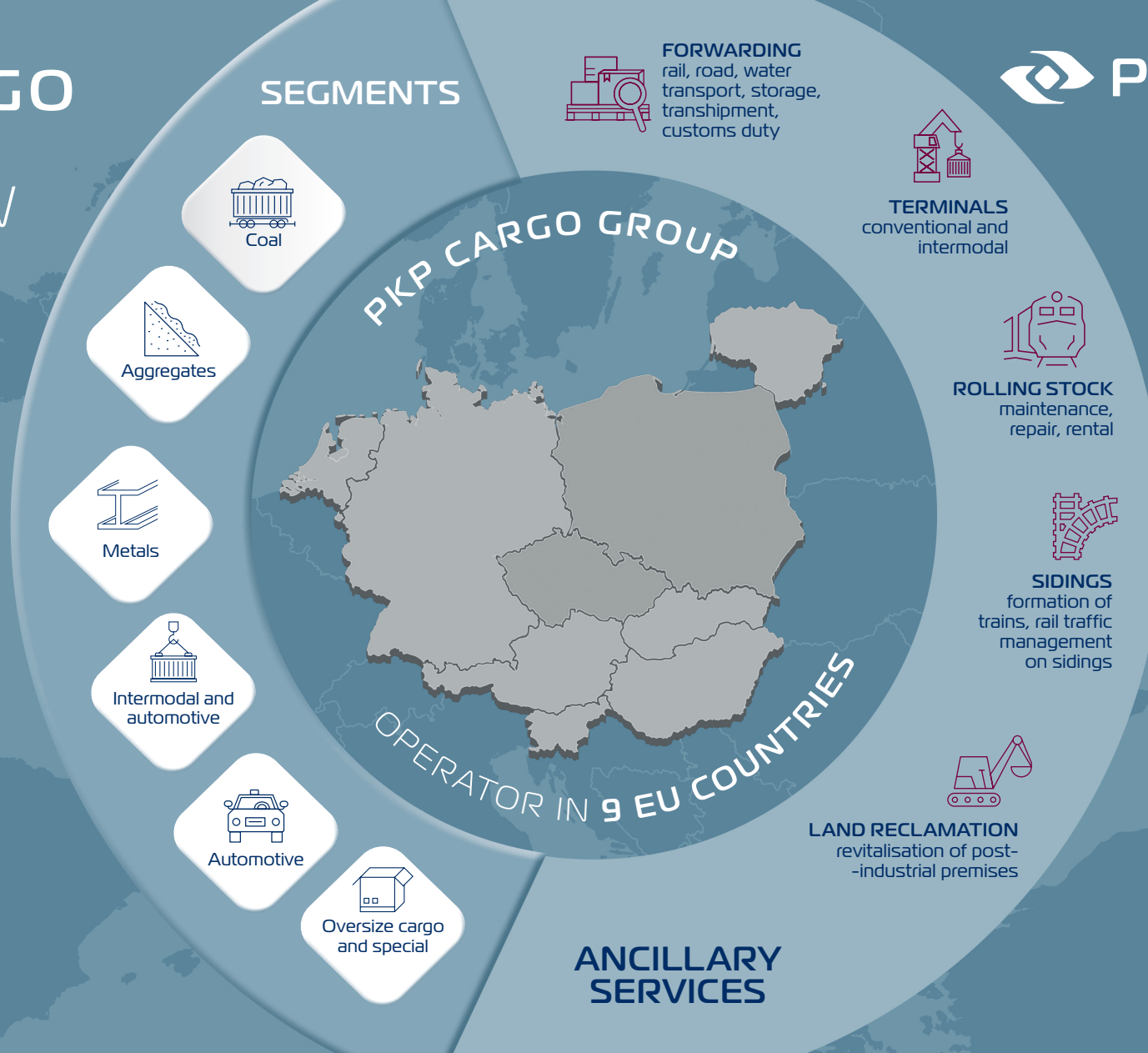




PKP CARGO GROUP'S OVERVIEW



MAIN BUSINESS LINES AND CARGO GROUPS





PKP CARGO'S FREIGHT TRANSPORT DIRECTIONS



PKP CARGO'S FREIGHT TRANSPORT DIRECTIONS



Intermodal



Hard coal
Coke



Aggregates
Building materials



Iron Ore
Metals



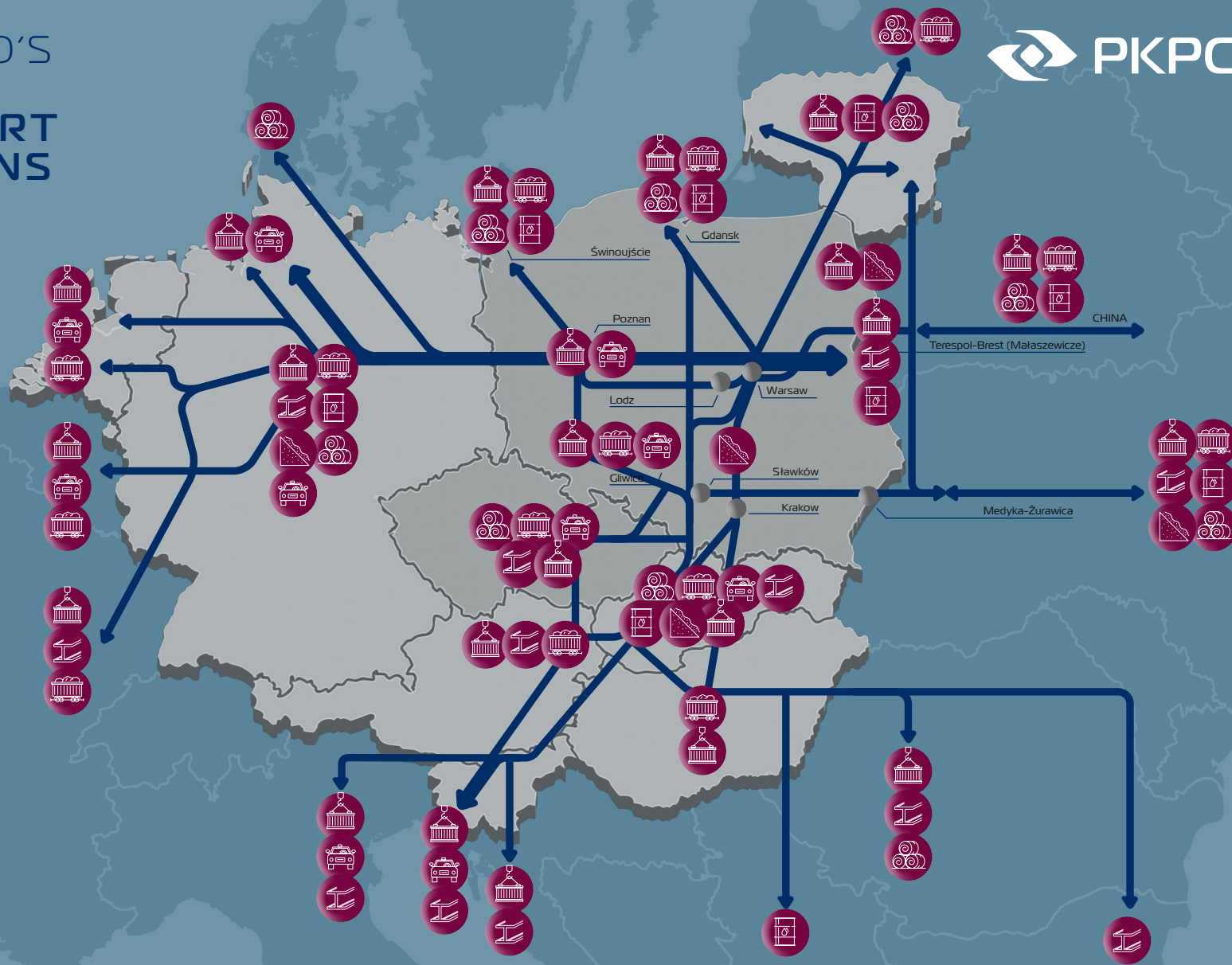
Liquid fuels
Chemicals



Wood
Agriculture



Automotive





TRANSPORT OF GOODS TO AND FROM UKRAINE

BORDER CROSSINGS ON THE EASTERN BORDER OF POLAND



BORDER CROSSINGS ON THE EASTERN BORDER OF POLAND

Structure of goods
transported
by PKP CARGO
in the Poland-Ukraine
relation

Kuźnica Białostocka-Bruzgi

Terespol-Brest (Małaszewicze)

Dorohusk-Jagodin

Hrubieszów-Izov

Medyka-Mostiska



>HARD COAL



>METALS
>METAL PRODUCTS
>ORE



>GRAINS



>FERTILISERS



>INTERMODAL
TRANSPORT



>OIL
>PETROLEUM
TRANSPORT

TRANSPORT OF GOODS TO AND FROM UKRAINE



PKP CARGO GROUP'S **DEVELOPMENT AREAS**

WE ARE BUILDING A POSITION
AS AN INTERNATIONAL LOGISTICS OPERATOR





PKP CARGO
GROUP'S
**DEVELOPMENT
AREAS**

INTERNATIONAL POSITION



PKP CARGO GROUP'S DEVELOPMENT AREAS

GROWTH AND INVESTMENTS

Investments in rolling stock
development



Zduńska Wola – Karsznice



Opening of the reloading terminal
in Zduńska Wola-Karsznice

An intermodal terminal in the central Poland, at the junction of the main European East-West and North-South transport route connecting, among others, the Adriatic, Baltic and North Seas, located directly on the S8 road linking the terminal with the European highway network.



PKPCARGO.COM